

Installing the ERLPhase USB Driver

Serial communication with ERLPhase 4000 series products may be achieved through the front panel USB serial port provided. Driver installation is required for proper serial connection and communication with the ERLPhase 4000 series products. Installation order is not critical; however, driver installation is recommended prior to installing other ERLPhase provided software components. **Install the driver before connecting the USB cable from the PC to the 4000 series unit.**

The following procedure is used to install the *D03467 – ERLPhase USB Driver Installation* on a computer which will be used to communicate through the front USB port of all ERLPhase 4000 series relaying and recording equipment.

Note: If you have the previous version of the ERLPhase driver installed and wish to install this digitally signed USB driver, we recommend manually removing it before proceeding. Open Windows Control Panel and then select Programs and Features. In programs and features find and select the Texas Instrument TUSB3410 driver (version 6.5.9018.1 or earlier) and click Uninstall at the top of the list (or right click and select Uninstall).

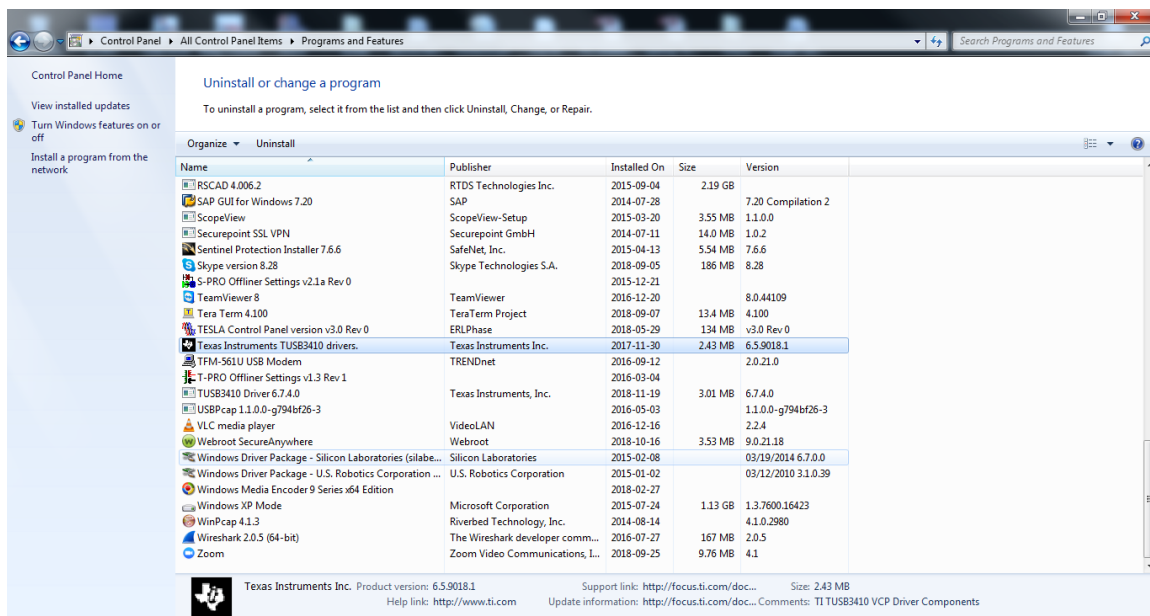


Figure 1 Control Panel → Program and Features screen

Installation process of USB Driver:

1. Download the ERLPhase_USB_Driver_Setup_v1.exe file from the ERLPhase web site (Support / Software).
2. Click on the “USB Driver” item to start the installation.
3. Allow the installation to continue (click on Yes) when you see the following pop-up:

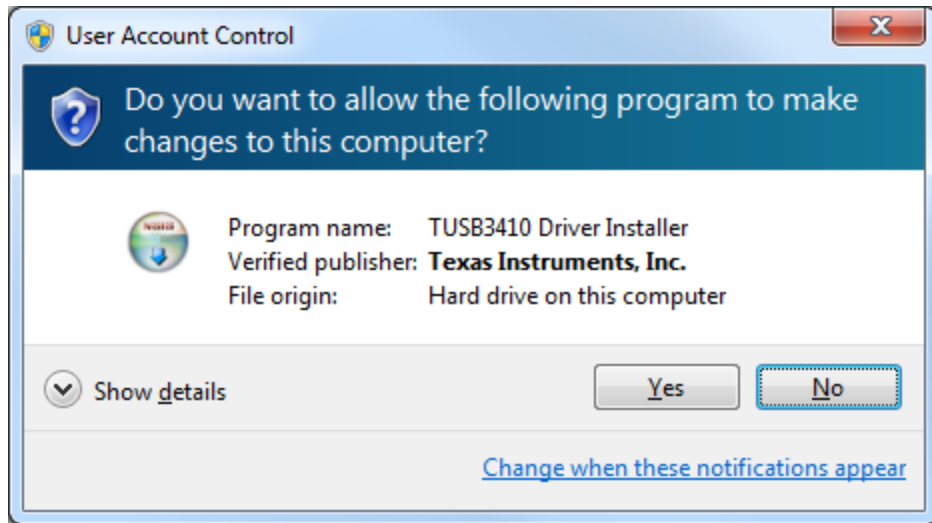


Figure 2 User Account Control warning screen for driver installation

4. The following install wizard will start up and install the TUSB3410 driver to the computer. At this time **do not attach** the USB cable to the front of the ERLPhase relay or recorder.
5. Continue to follow the Install Wizard prompts.



Figure 3 USB driver installation set-up screen

6. Users must “accept the terms of the license agreement” to successfully install the USB driver.

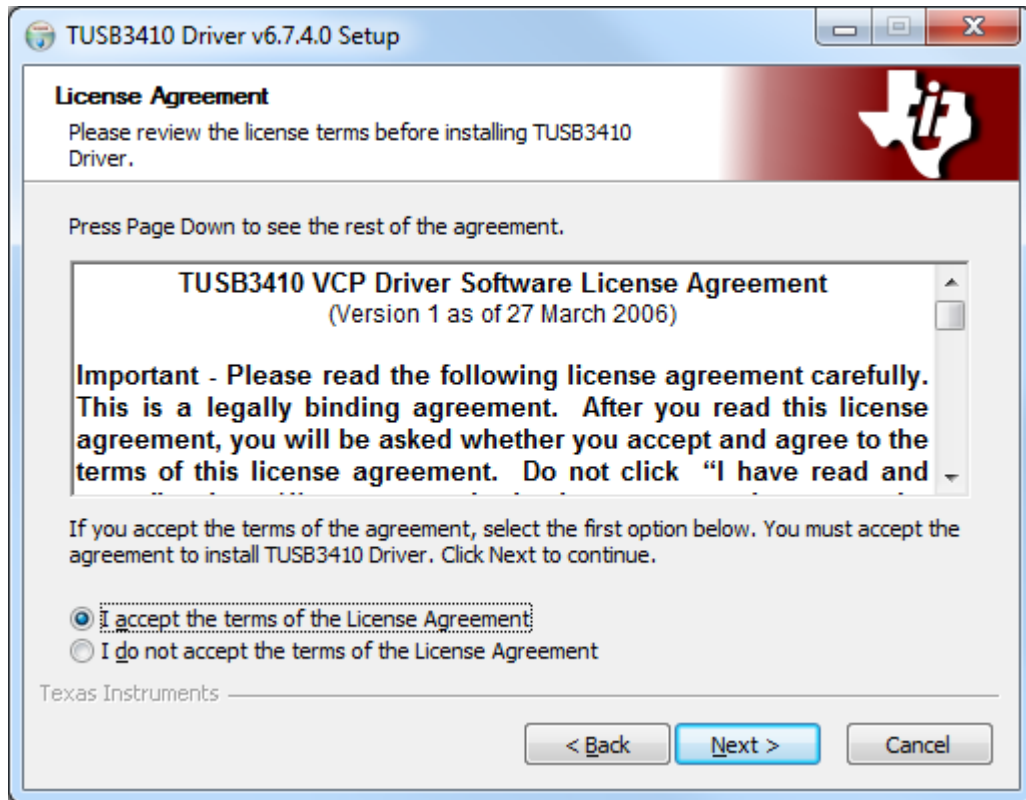


Figure 4 USB driver license agreement screen

7. Choose the Install Location

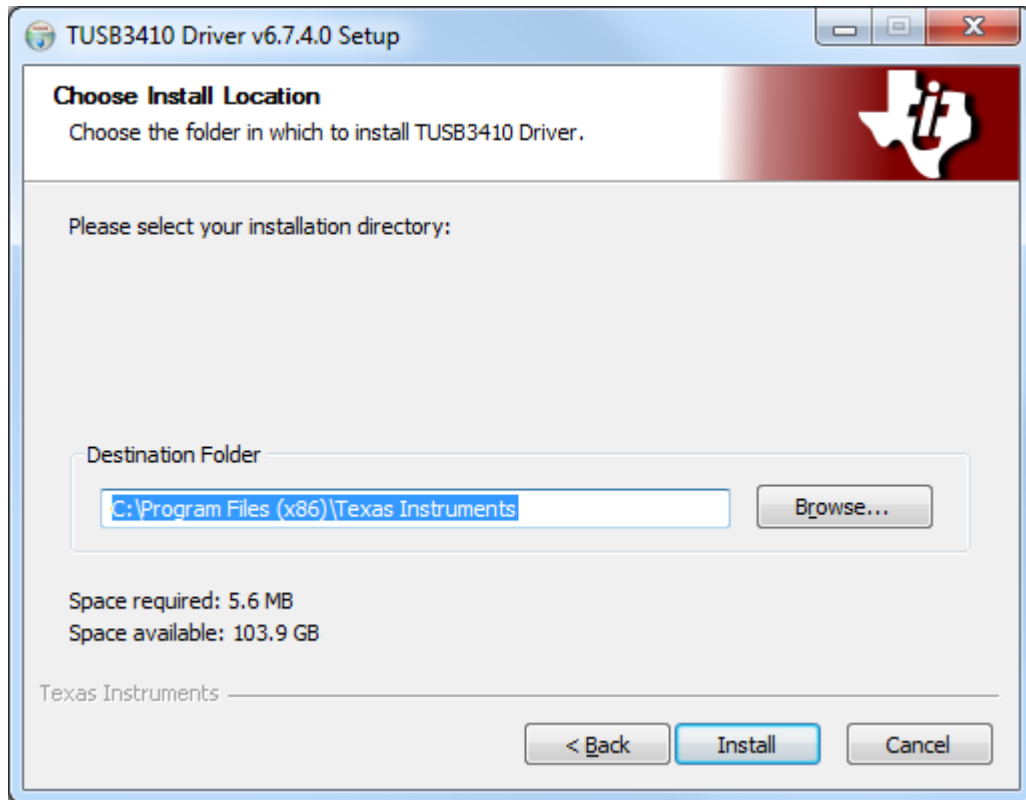


Figure 5 Choose install location screen

8. The "Installing" window should show progress.

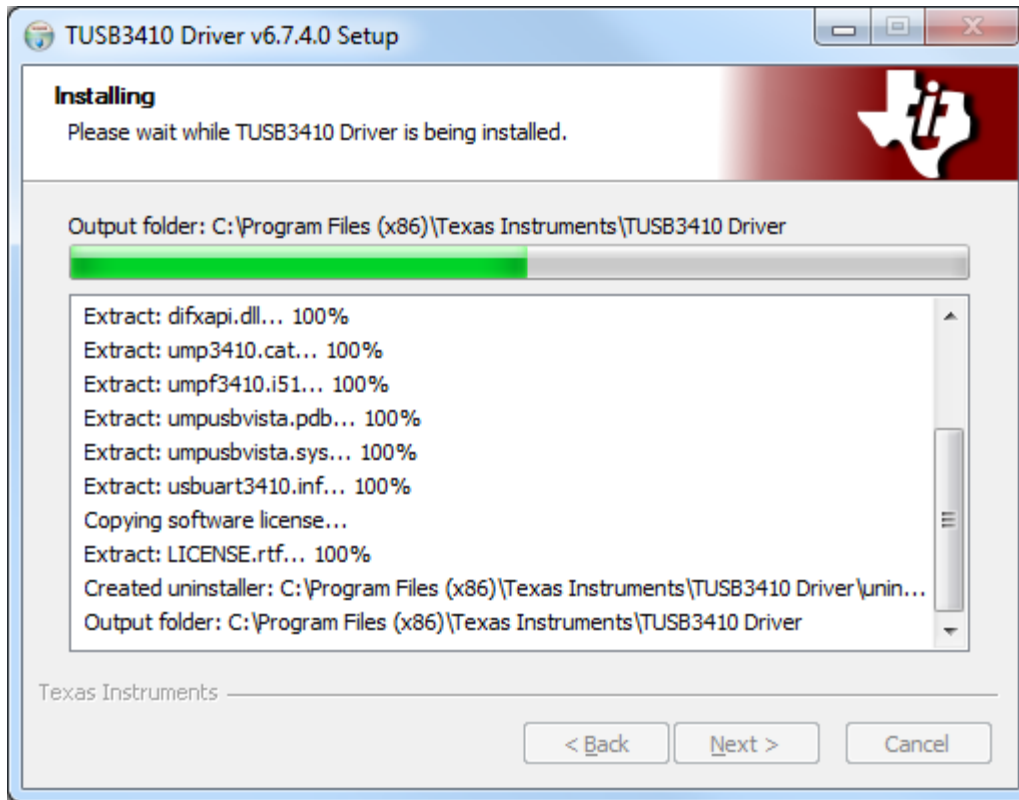


Figure 6 Installation progress screen

9. Click "Finish" and the USB drive is installed on the computer.

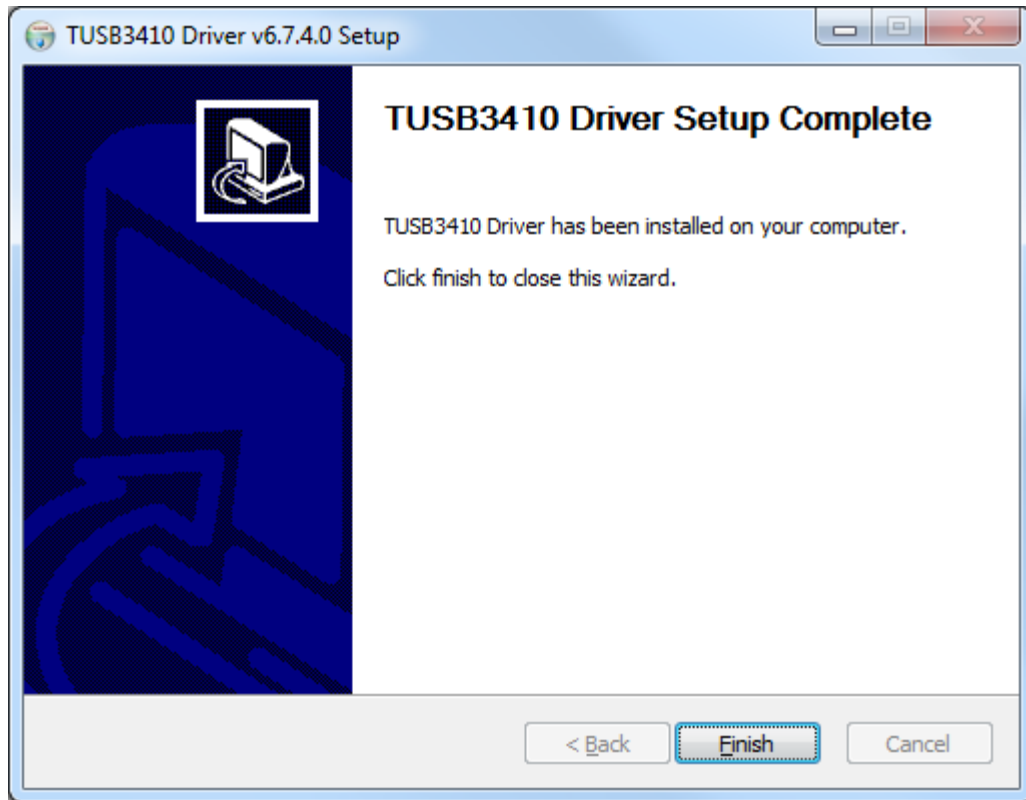


Figure 7 USB driver finishing screen

10. Now connect the USB cable between the ERLPhase device and computer. This will give “Installing device driver Software” pop up at the bottom right corner of the taskbar.

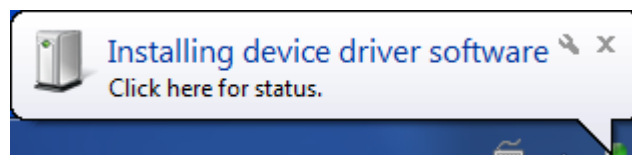


Figure 8 USB driver found new hardware pop up

11. In a min or 2 “Device driver software installed successfully” pop up appears with the COM#

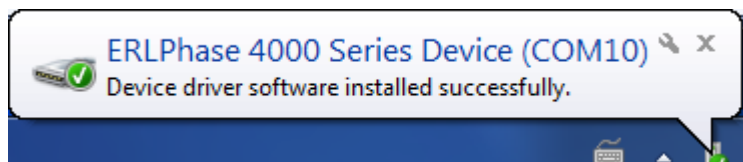


Figure 9 Driver found new hardware pop up

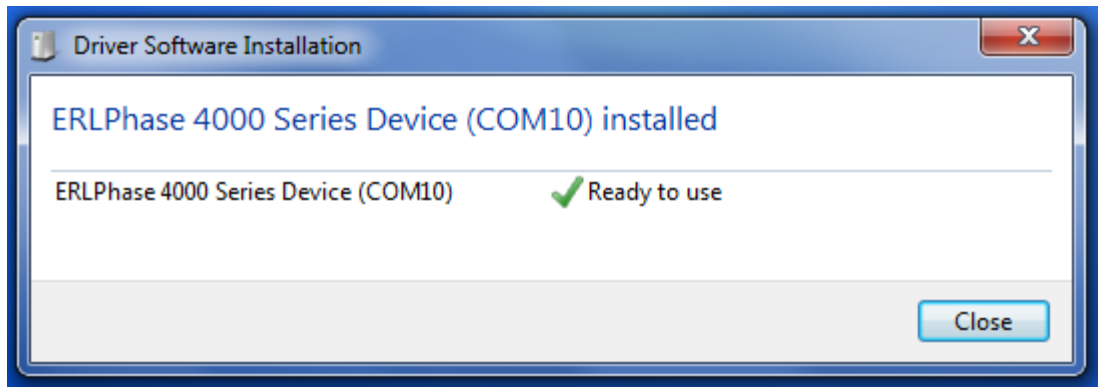


Figure 10 Driver installed screen.

12. The following steps will verify that the USB driver has been installed. Open Windows Control Panel. Select and click on the Device Manager Icon (in Windows 10, in 'large icons view in case the icon is not visible.)

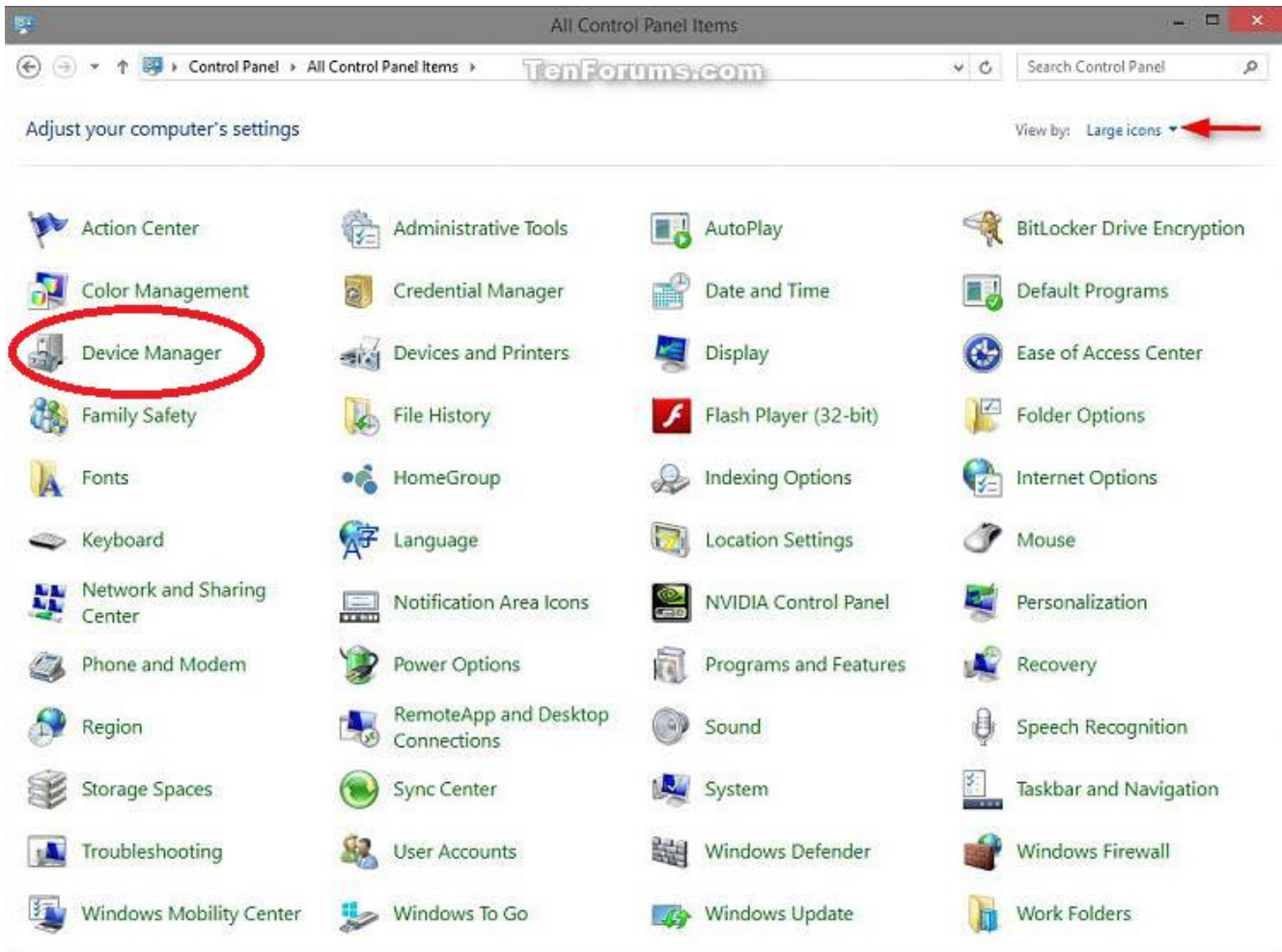


Figure 11 Windows 10 Control Panel

13. The following screen will verify that the new USB port (COM port) is installed. Please note that the PC needs to be connected to the USB port in the front panel of the IED

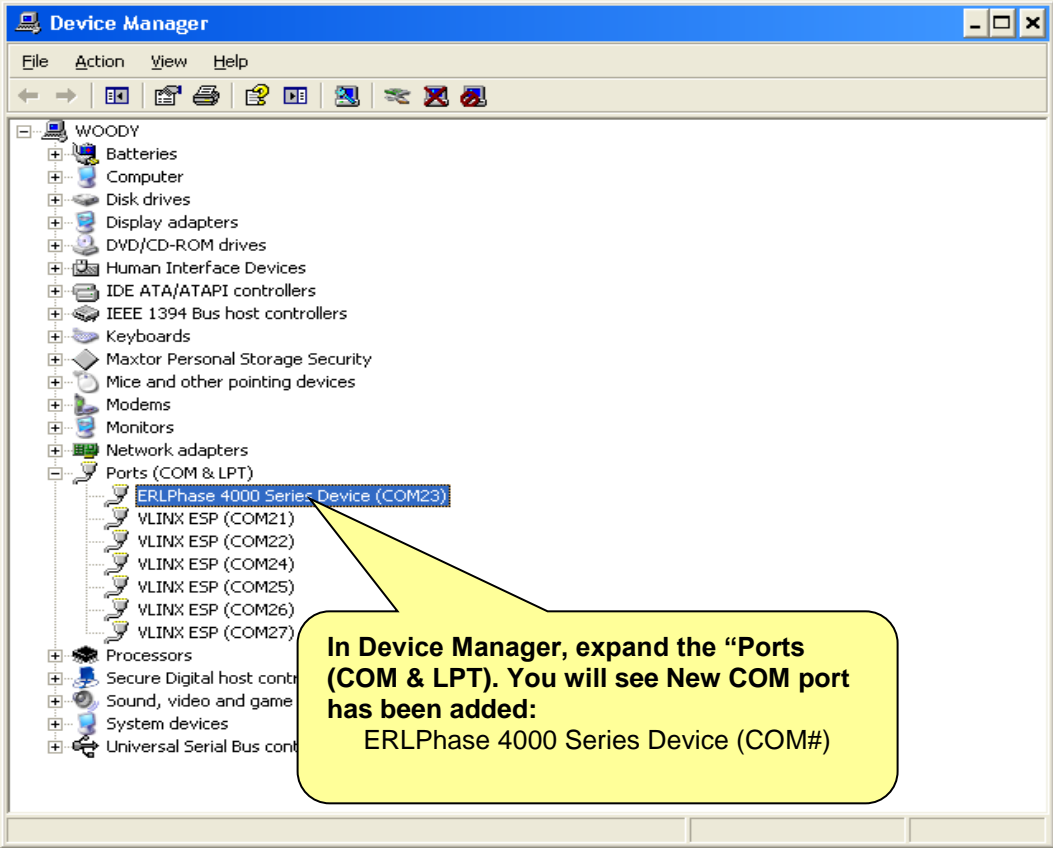


Figure 2 Device Manager screen