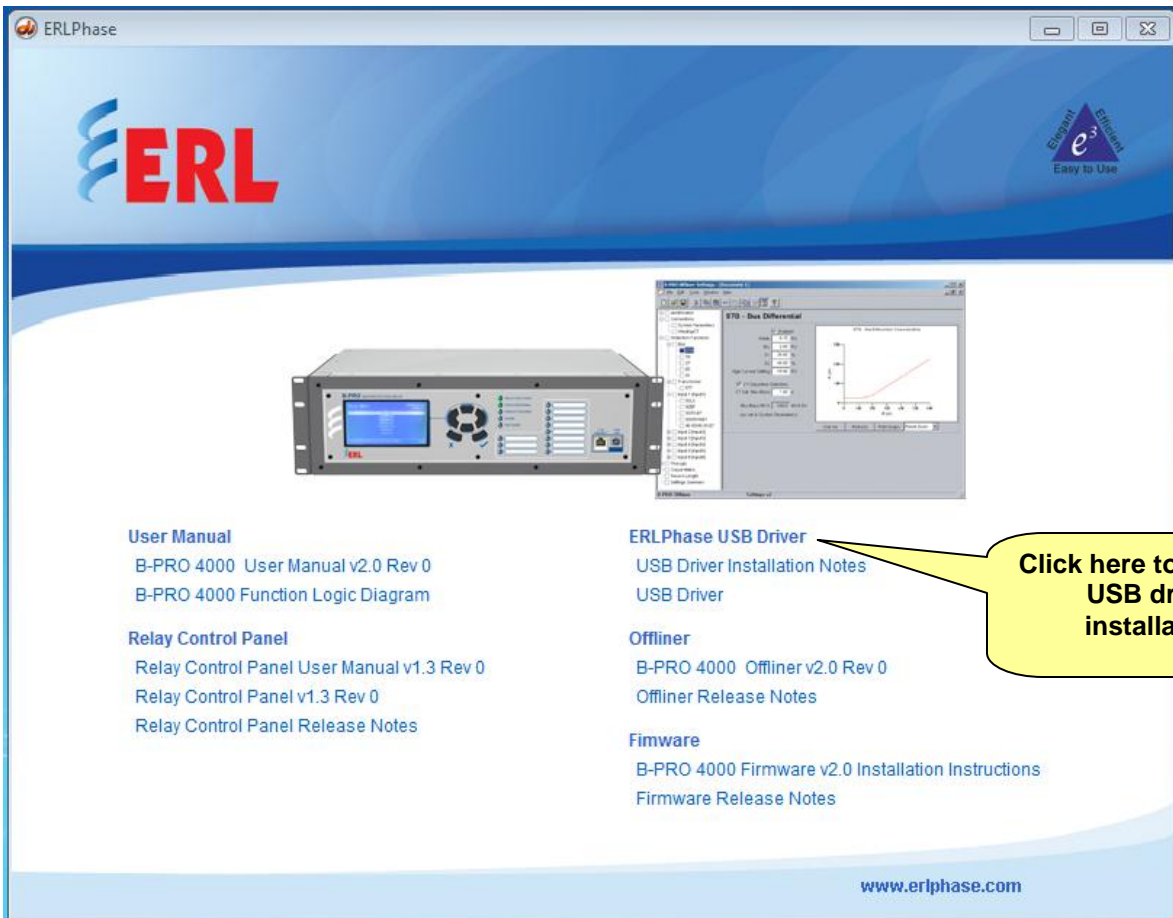


Installing an ERLPhase USB Driver Windows XP and Windows 7

The following procedure is used to install the *D03467 – ERLPhase USB Driver Installation* on a computer which will be used to communicate through the front USB port of all ERLPhase 4000 series relaying and recording equipment. Installing this driver is the first step to be done before installing other software on the product CD.

1. On the main ERLPhase startup screen, click on the “USB Driver” item under the ERLPhase USB Driver heading.



User Manual
B-PRO 4000 User Manual v2.0 Rev 0
B-PRO 4000 Function Logic Diagram

Relay Control Panel
Relay Control Panel User Manual v1.3 Rev 0
Relay Control Panel v1.3 Rev 0
Relay Control Panel Release Notes

ERLPhase USB Driver
USB Driver Installation Notes
USB Driver

Offliner
B-PRO 4000 Offliner v2.0 Rev 0
Offliner Release Notes

Firmware
B-PRO 4000 Firmware v2.0 Installation Instructions
Firmware Release Notes

www.erlphase.com

Click here to start the USB driver installation

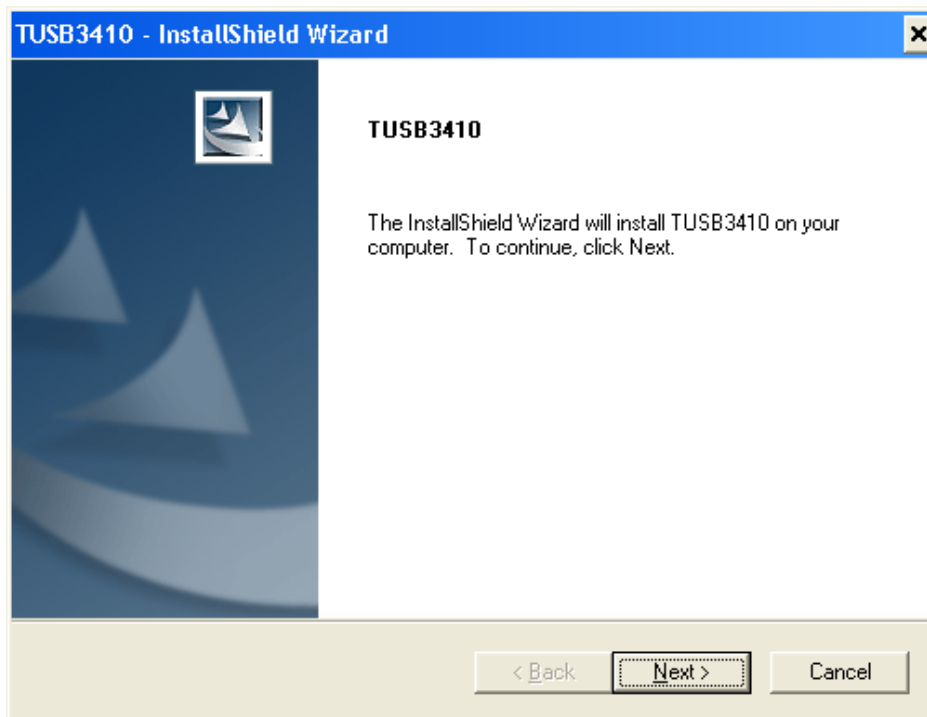
2. The following install wizard will start up and install the TUSB3410 driver to the computer. At this time **do not attach** the USB cable to the front of the ERLPhase relay or recorder.

Note

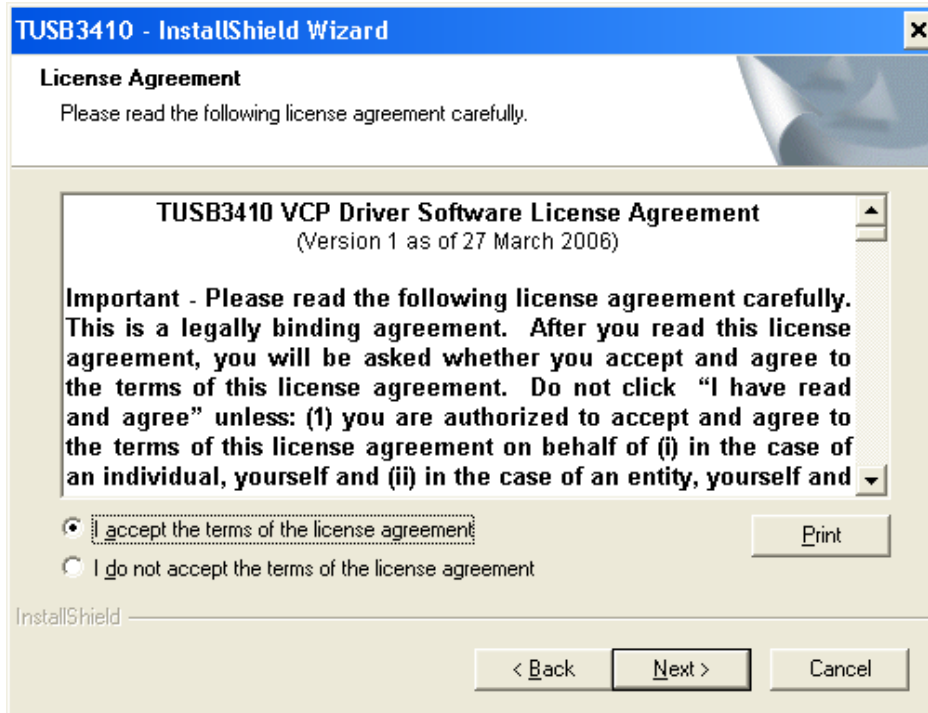
The install Wizard will install the USB driver in the directory:

C:\Windows\tiinst\TUSB3410

Continue to follow the Install Wizard prompts.

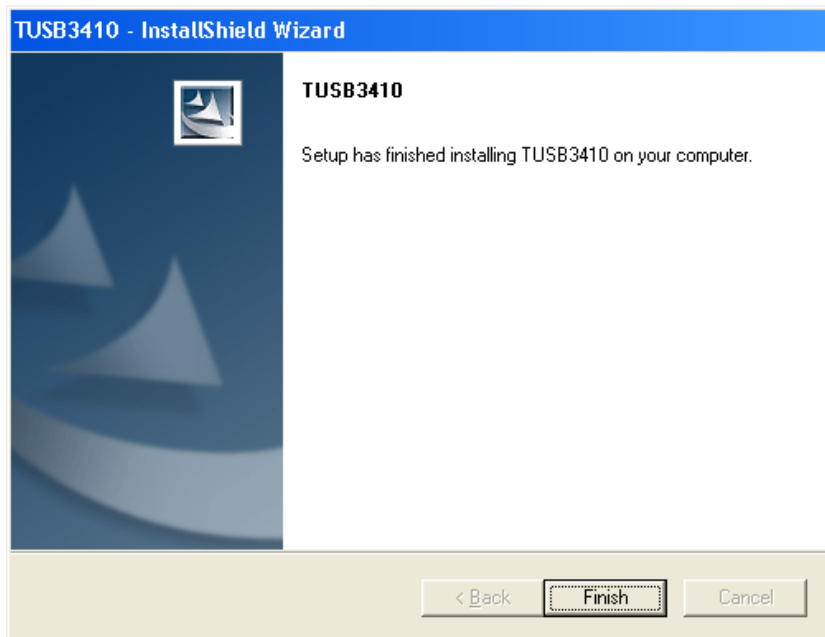


3. Users must “accept the terms of the license agreement” to successfully install the USB driver.

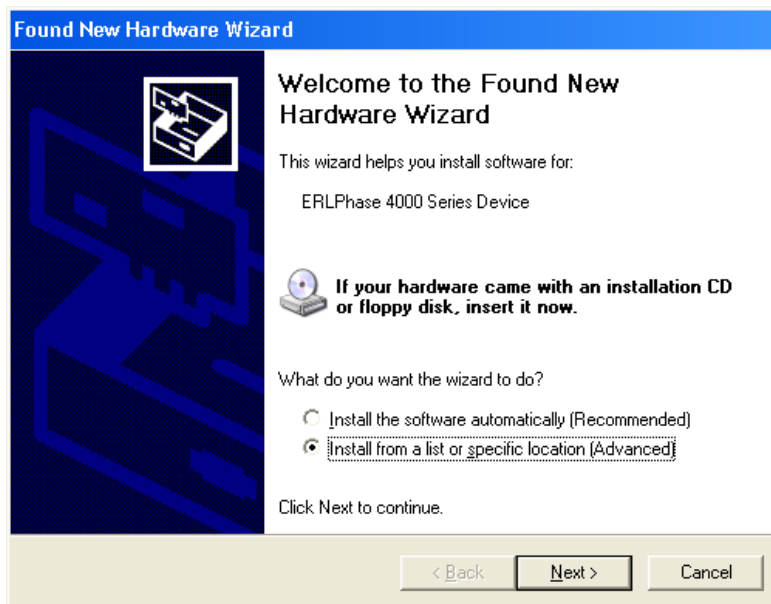


4. If either of the following messages appears, click “Install this driver software anyway” (or “Continue anyway”):
 - “Windows can’t verify the publisher” (Windows 7)
 - “The software you are installing has not passed Windows logo testing to verify its compatibility with Windows XP” (Windows XP)

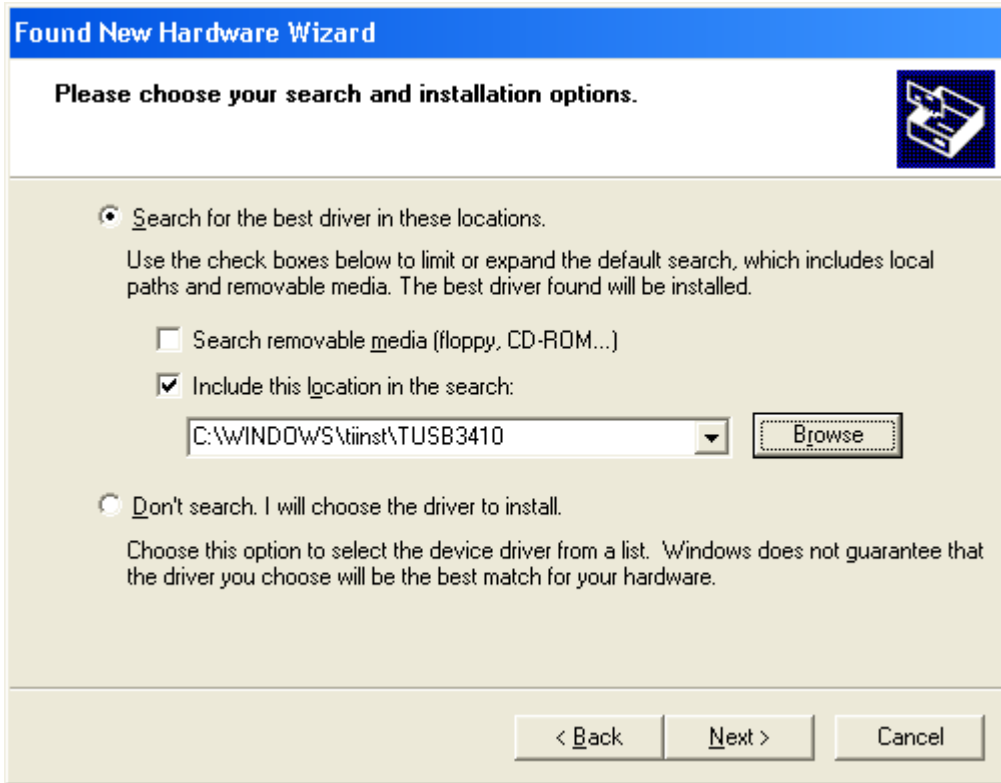
5. Click "Finish" and the USB drive is installed on the computer.



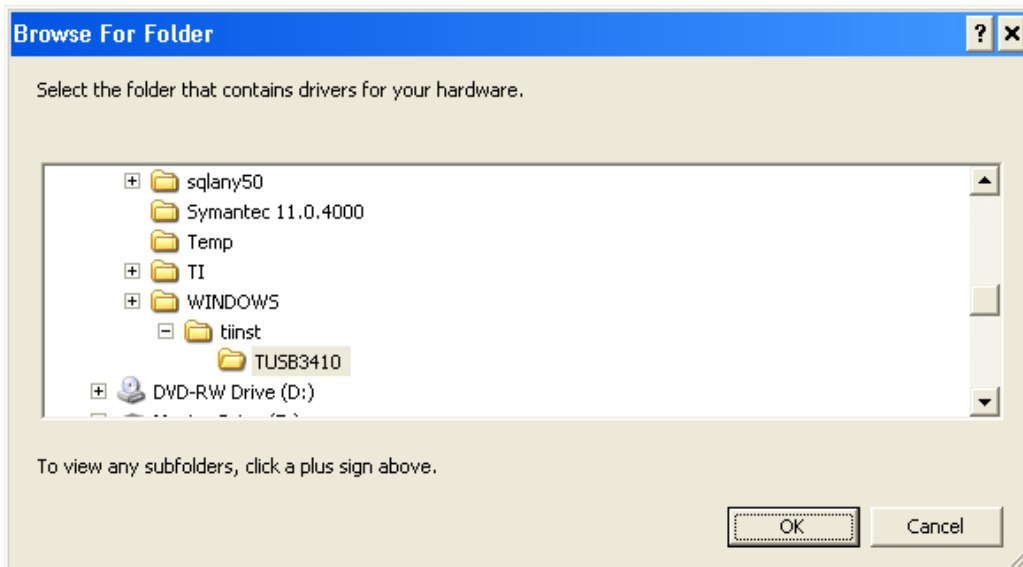
6. Now connect the USB cable between the ERLPhase device and computer. This will cause the Microsoft "Found New Hardware" wizard to appear. Select "Install from a list or a specific location (Advanced)".



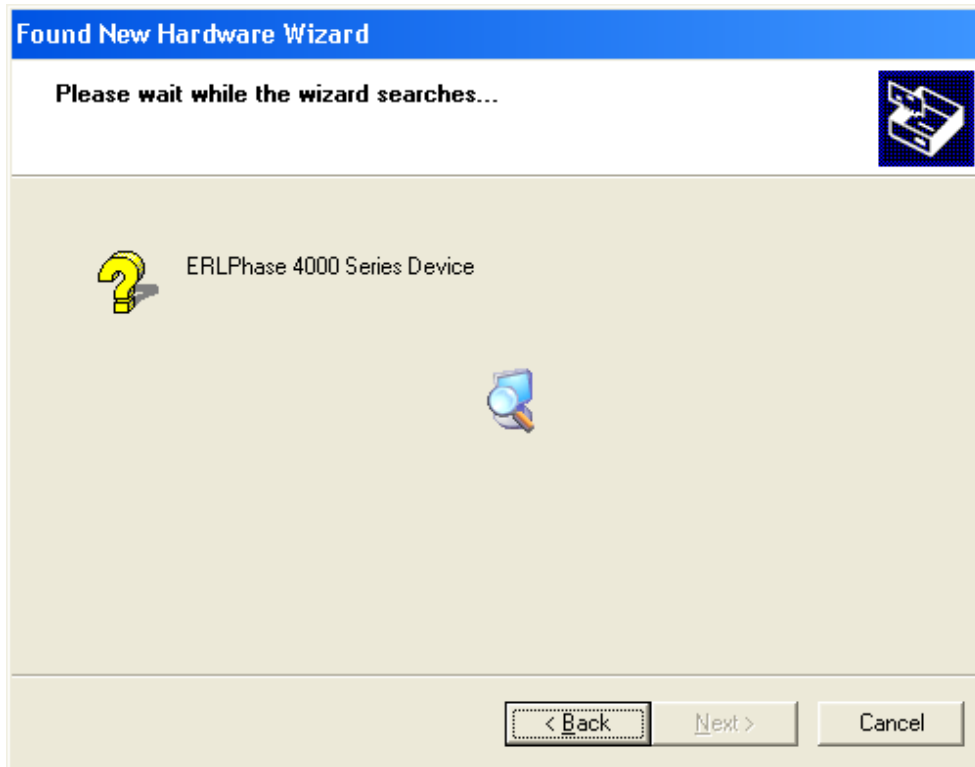
7. The next New Hardware Wizard screen allows user to “Browse” for the driver to be used on the ERLPhase products. Fill in the screen as shown below, using the directory location as shown in “Browse” window. Click “Next>” to continue.



8. Browse for the USB driver.



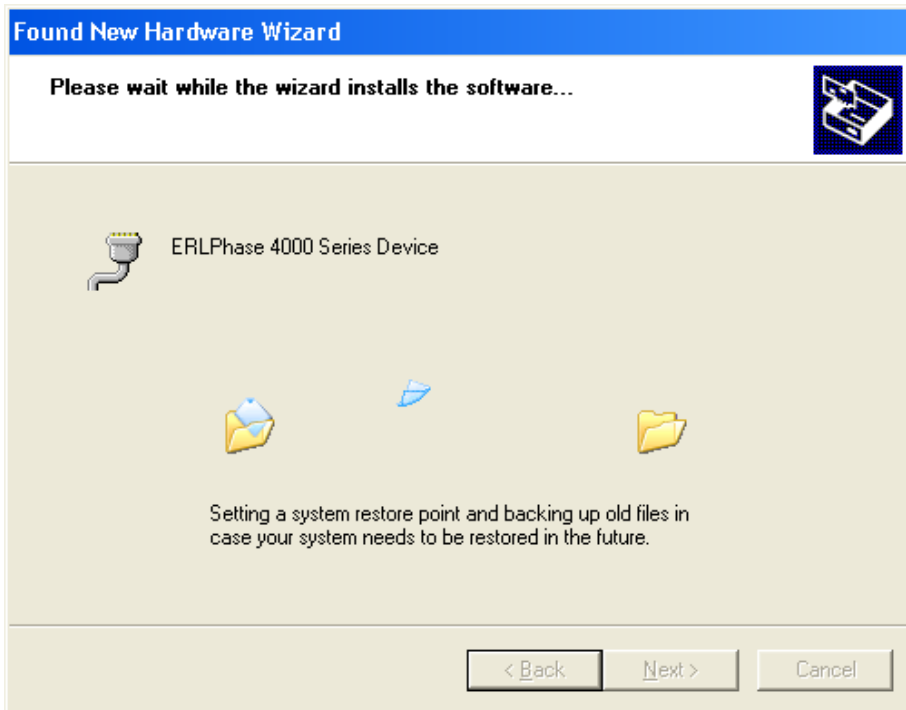
9. New Hardware Wizard now searches for the driver.



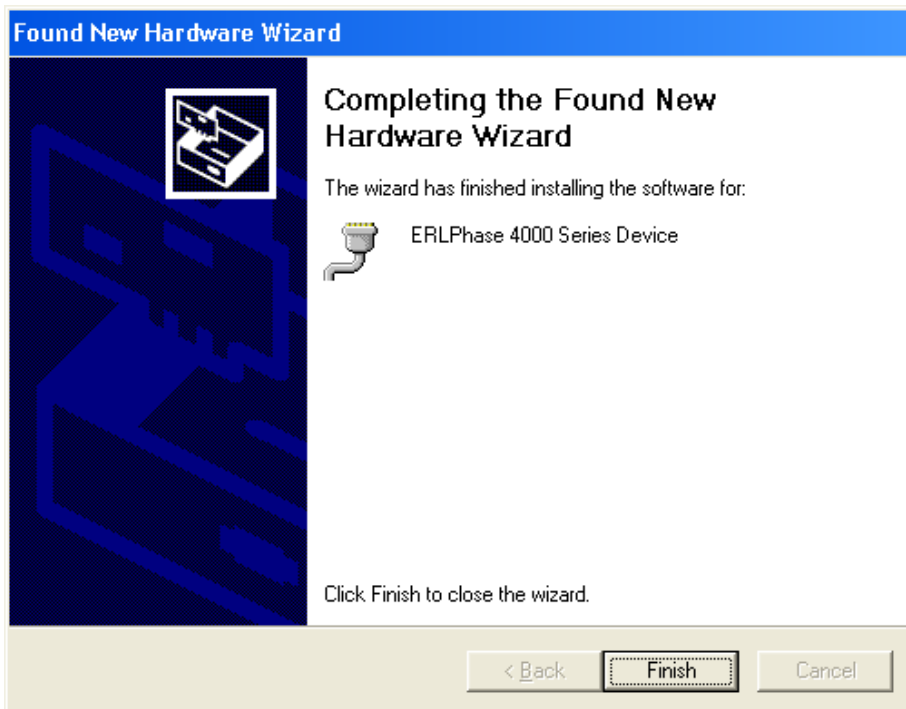
10. The wizard is now ready to install the driver, but Microsoft asks the following question (see below) – select and click “Continue Anyway” to continue installation.



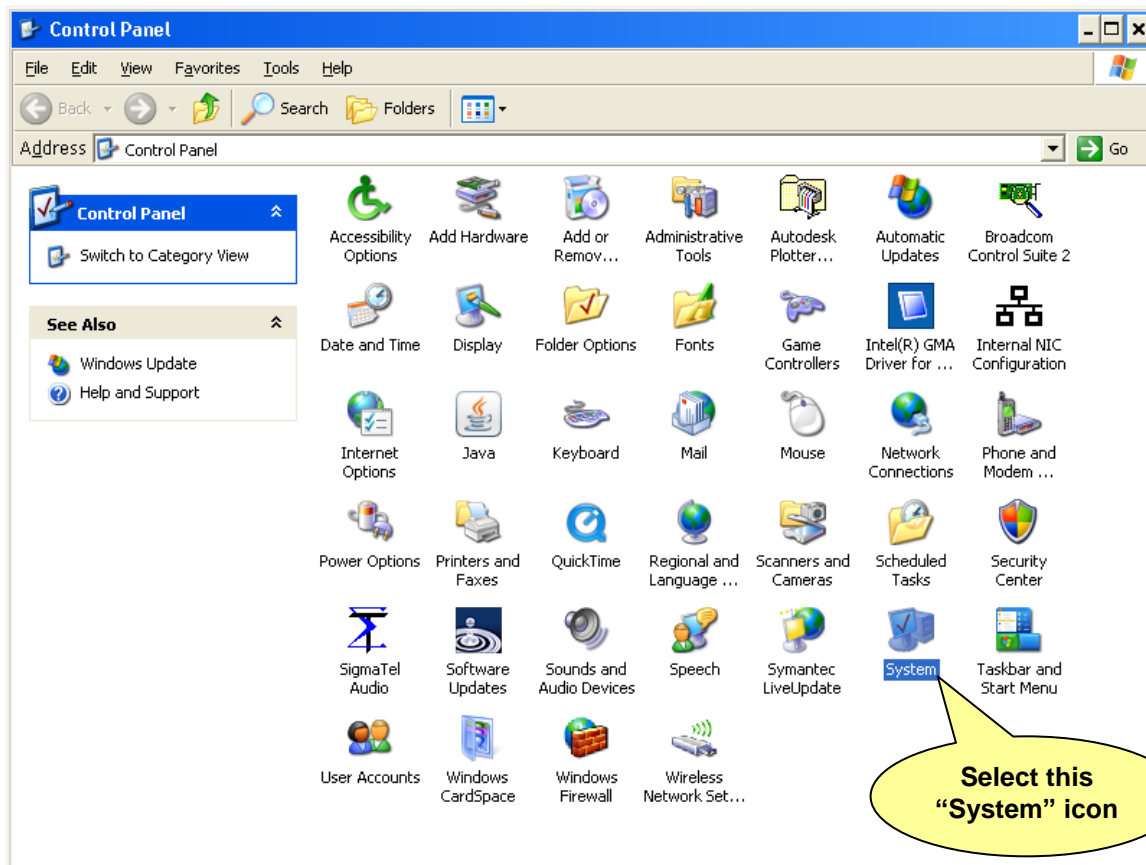
11. For the next few minutes, the wizard will continue to the install the driver software.

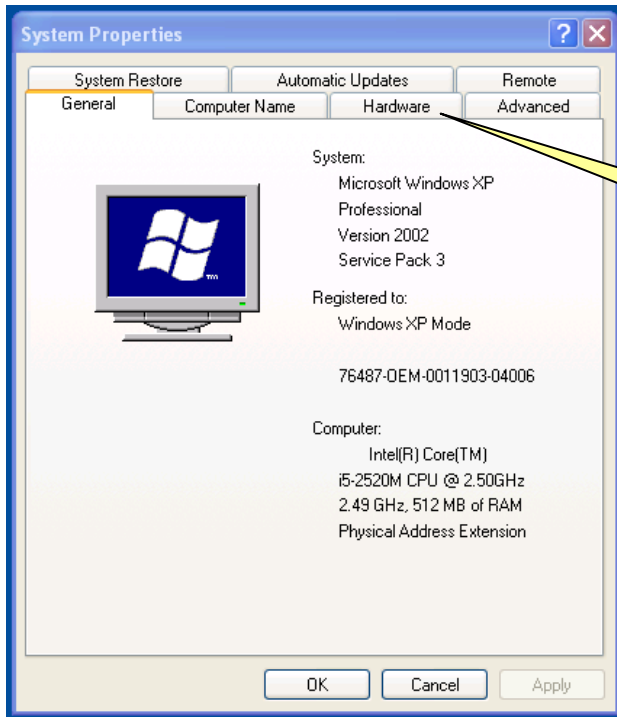


12. Once the install wizard has finished installing driver software, click on "Finish" to complete the installation.

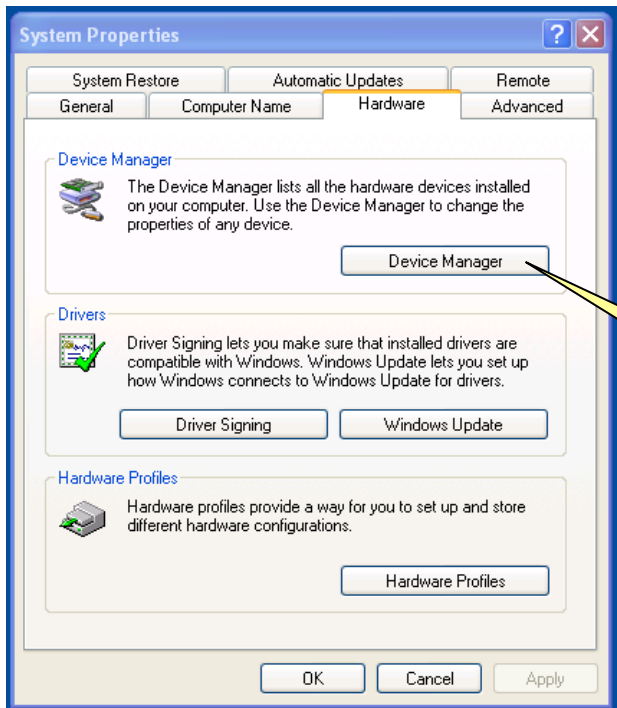


13. The following steps will verify that the USB driver has been installed. Open Windows Control Panel. Select and click on the “System” icon (in Windows 7, in ‘small icons’ view, just select “Device Manager”).



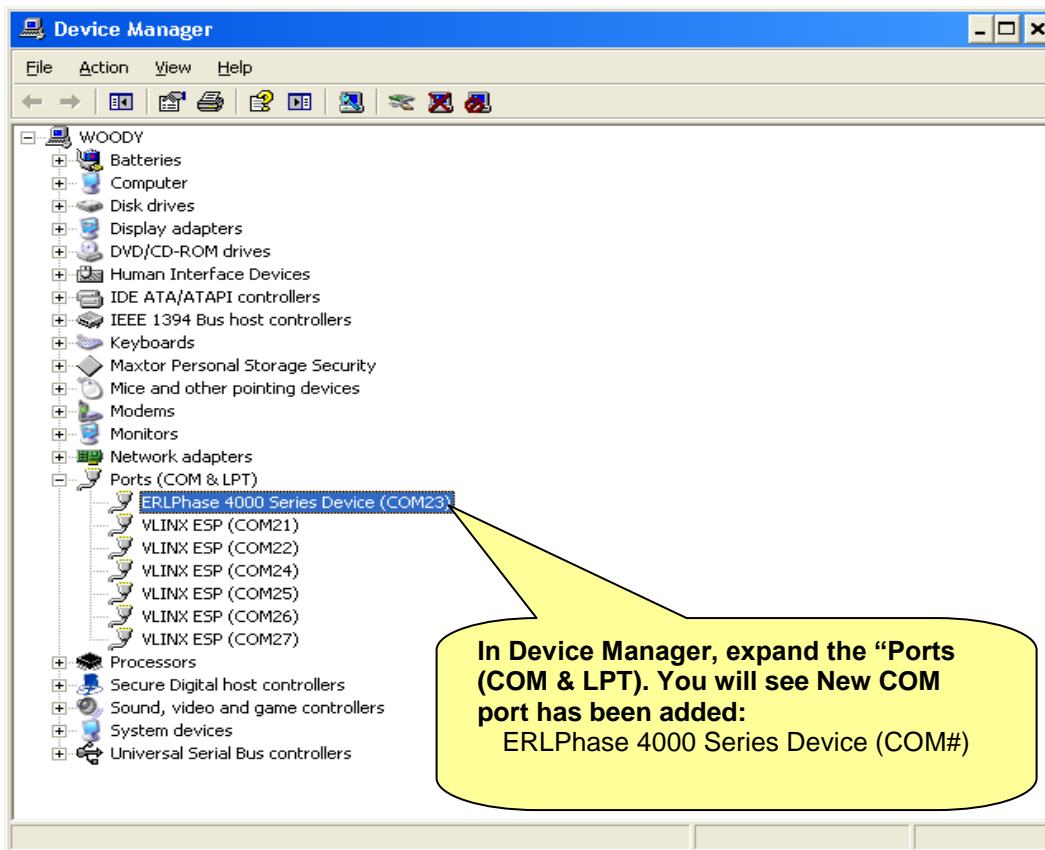


Select "Hardware" tab

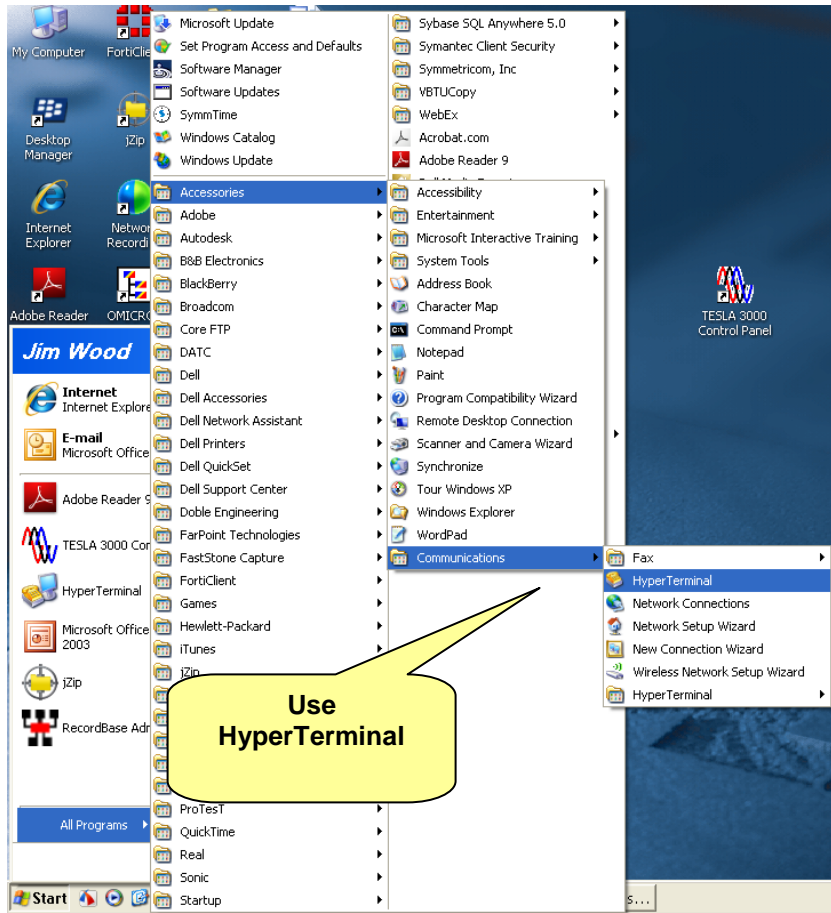


Click "Device Manager"

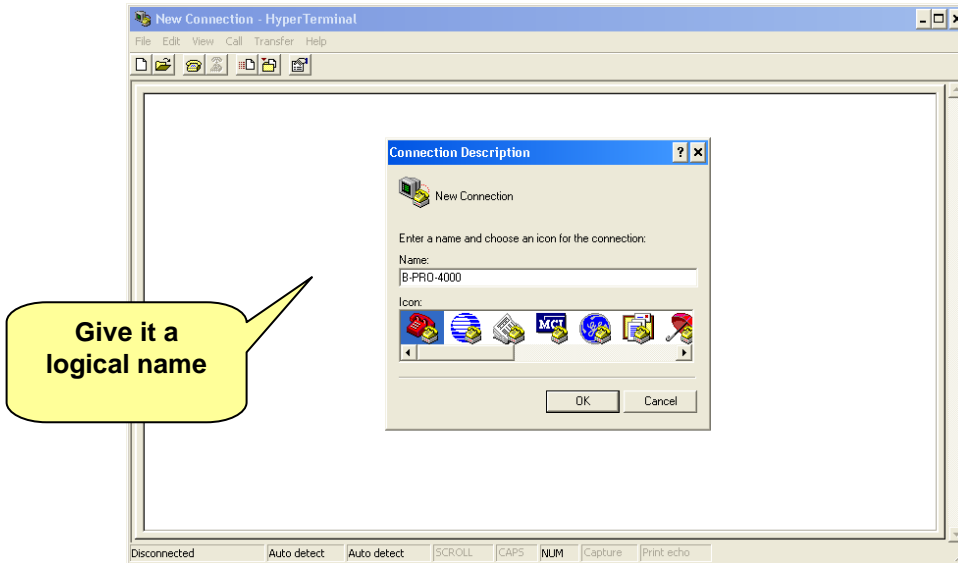
14. The following screen will verify that the new USB port (COM port) is installed.



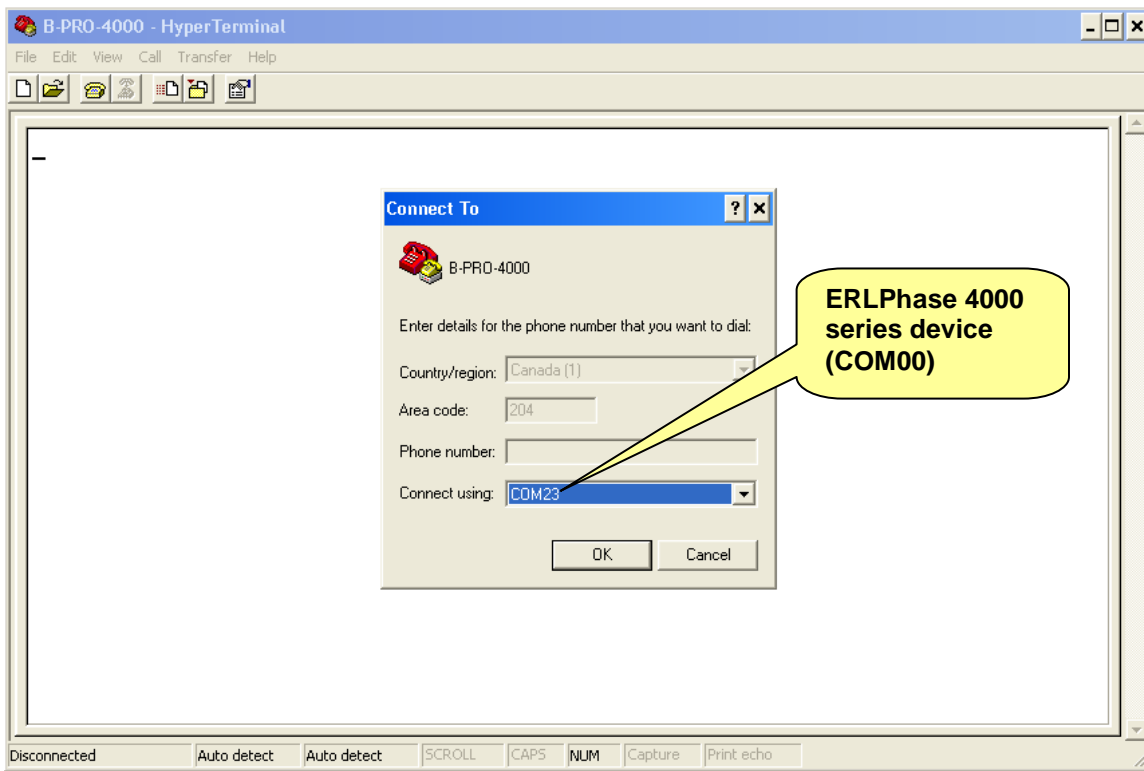
15. Let's now look at setting up HyperTerminal communications between USB Computer and ERLPhase relay/recording devices. In Windows 7, the third party software HyperTerminal PE can be used. In Windows XP (example follows), HyperTerminal is included.



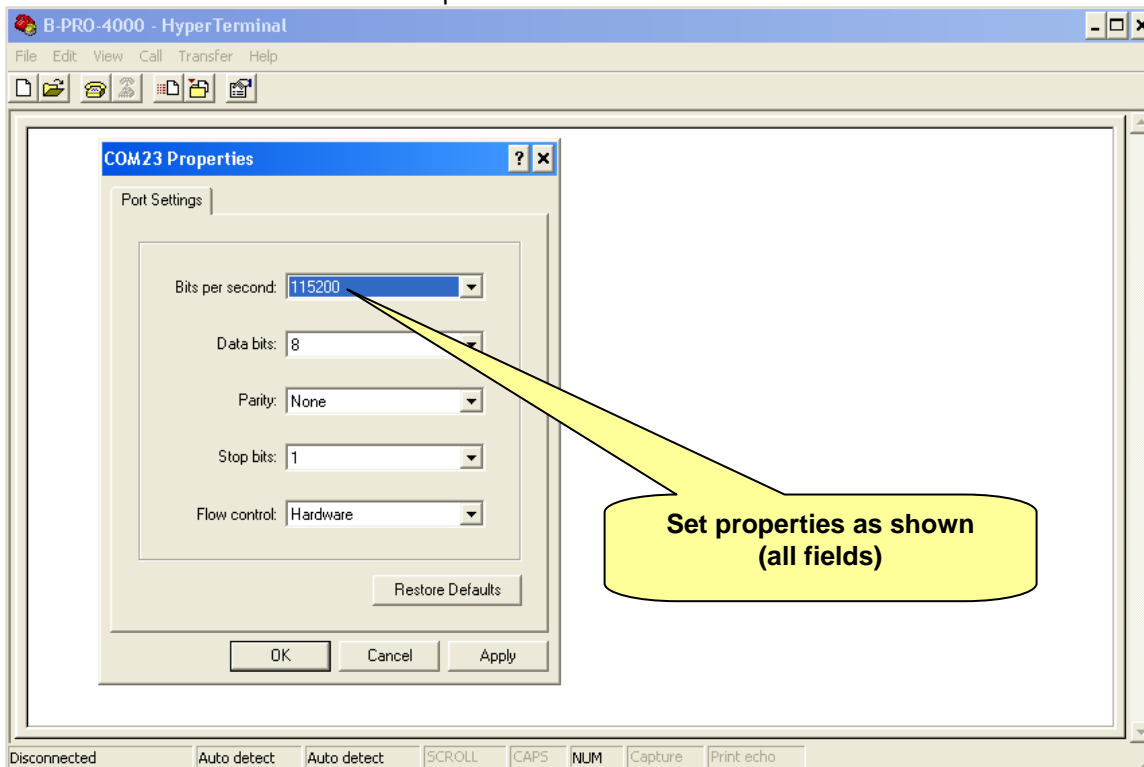
16. Set up the new Terminal Interface.



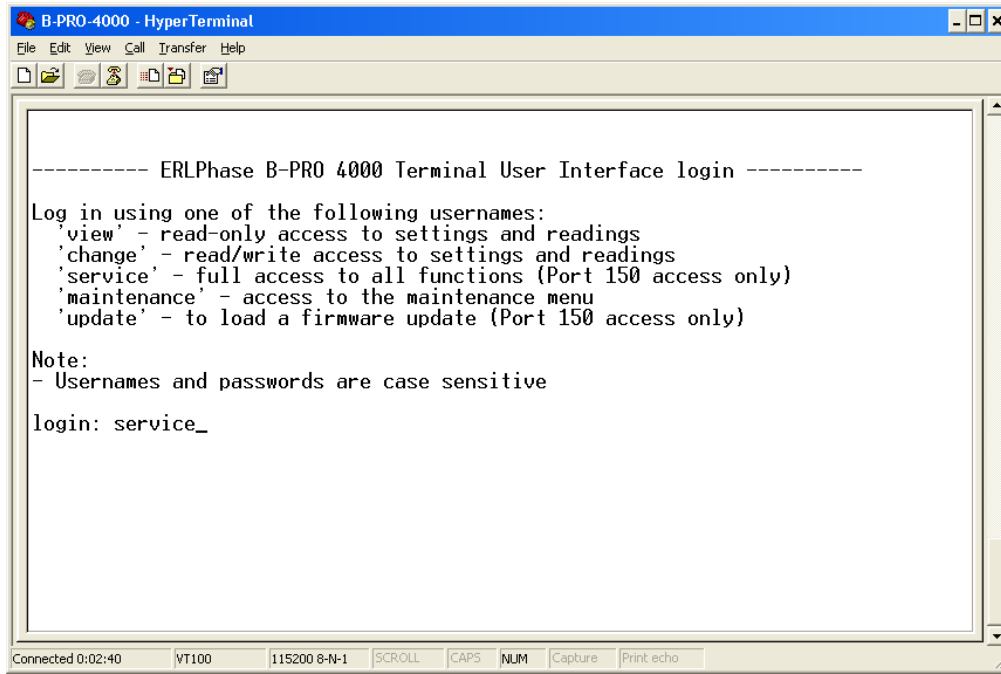
17. Set up COM port – use COM port that ERLPhase 4000 series device is attached to.



18. Set baud rate to 115200 bits per second.



19. When connected to the relay via USB cable, click “Enter” and a “Login” prompt will appear. Type in “change” or “service” or “view”, which will then bring you to the “Main Menu”.



20. Select menu item “ID”, which will show the relay device’s information. At this point you have successfully established USB communications with an ERLPhase device.

